



This Armstrong-Smith Consulting white paper contains the following:

- A workflow to install Discoverer 10.1.2 Admin and Desktop editions
- A workflow to create an Apps mode EUL
- A workflow to set up Apps mode privileges
- A workflow to import business areas from Discoverer 4i

Setting up an EUL in Apps Mode - Windows



This document describes the steps you need to follow to install Discoverer Admin on a Windows system. Before you begin you need to make sure that you have Admin rights over the machine that you will be using. You also need to make sure that you have at least 1535 Mb of swap space and at least 150 Mb of Temp space.

To install the Discoverer Admin and Desktop editions, use the following workflow:

1. Insert the Business Intelligence Tools CD or navigate to a folder that contains an unzipped version of the tools. If installing from the CD, the installer should start straightaway. If installing from disk, or if the installing from CD and the installer does not start automatically, navigate to the [install](#) folder of the tools and double-click the file called [setup.exe](#).
2. The Oracle Universal Installer (OUI) will check that you are using a supported version of Windows and that you have enough space.

A screenshot of the Oracle Universal Installer window. The window title is "Oracle Universal Installer". The text inside the window shows the following:

```
Starting Oracle Universal Installer...
Checking installer requirements...
Checking operating system version: must be 5.0, 5.1 or 5.2 . Actual 5.1
                                     Passed
Checking monitor: must be configured to display at least 256 colors . Actual
4294967296 Passed
Checking swap space: must be greater than 1535 MB . Actual 4092MB Passed
Checking Temp space: must be greater than 150 MB . Actual 23301 MB Passed

All installer requirements met.

Preparing to launch Oracle Universal Installer from C:\DOCUME~1\Michael\LOCALS~
1\Temp\OraInstall12005-12-16_02-29-28PM. Please wait ...
```

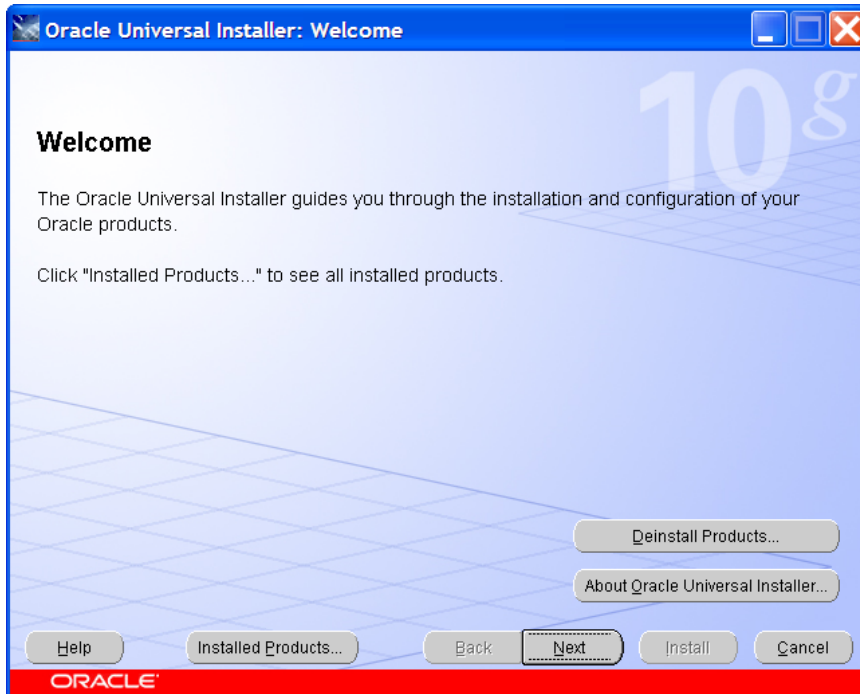
A blue callout bubble points to the "Checking swap space" line, which shows "Actual 4092MB Passed".

Note: See how Discoverer checks for memory

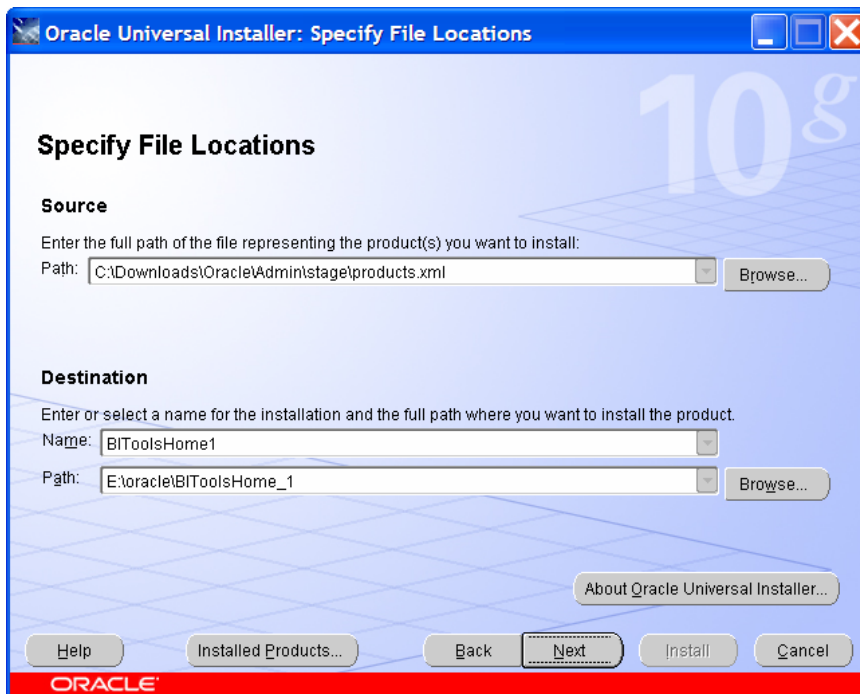
Setting up an EUL in Apps Mode - Windows



3. If all prerequisites are met, you will be presented with the following [Welcome](#) screen, click **Next**



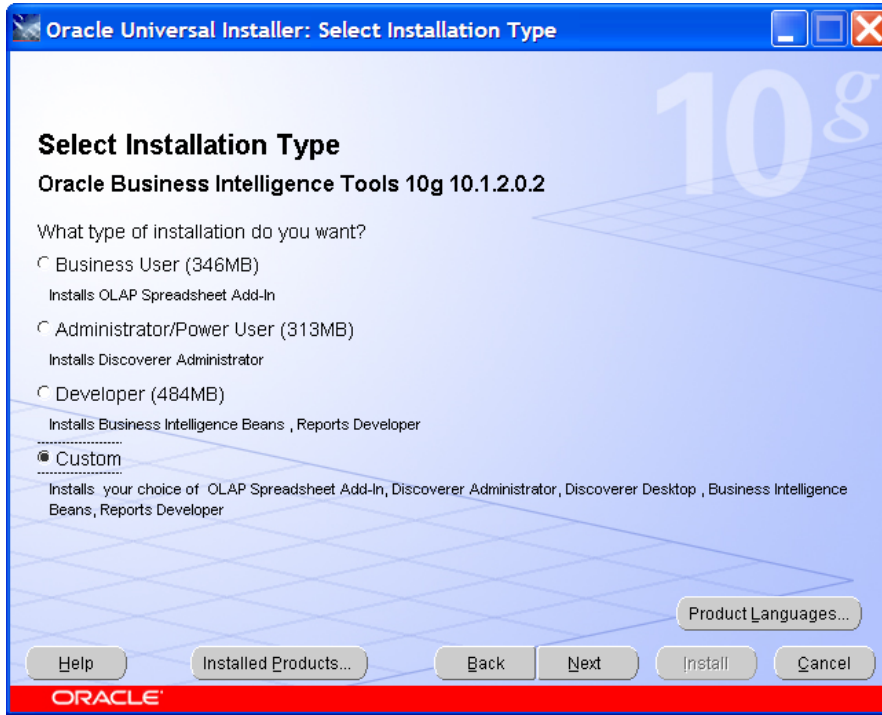
4. On the [Specify File Locations](#) screen, you are required to provide a Name and Path for the Instance that you are creating. The Name must begin with a character. In our example the name used was "BIToolsHome1" and the path was E:\oracle\BIToolsHome_1. When done, click **Next**



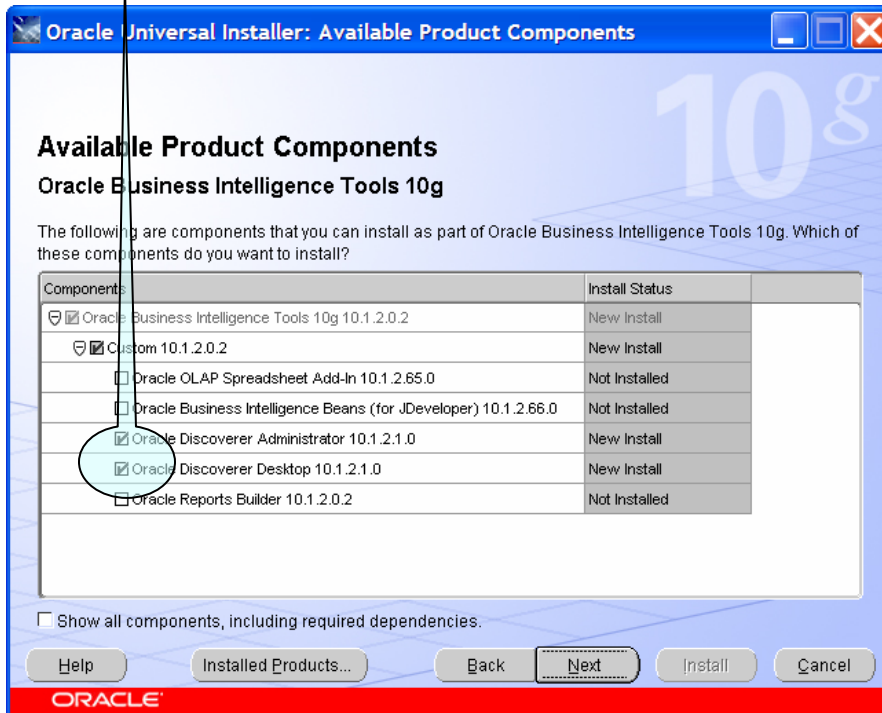
Setting up an EUL in Apps Mode - Windows



5. On the **Select Installation Type** screen, select **Custom** and click **Next**



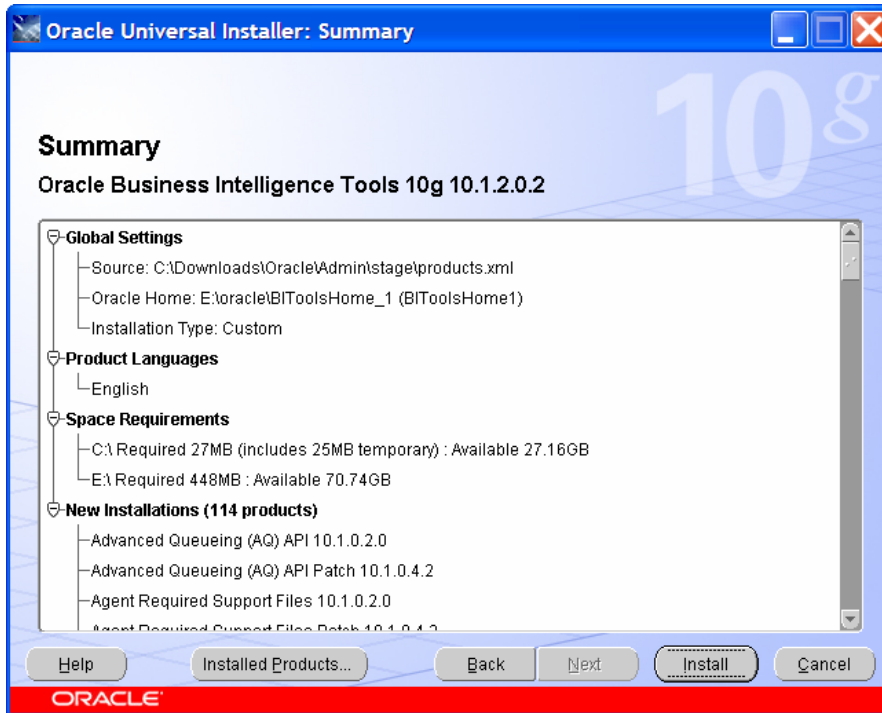
6. On the **Available Product Components** screen, select both **Administrator** and **Desktop** and click **Next**



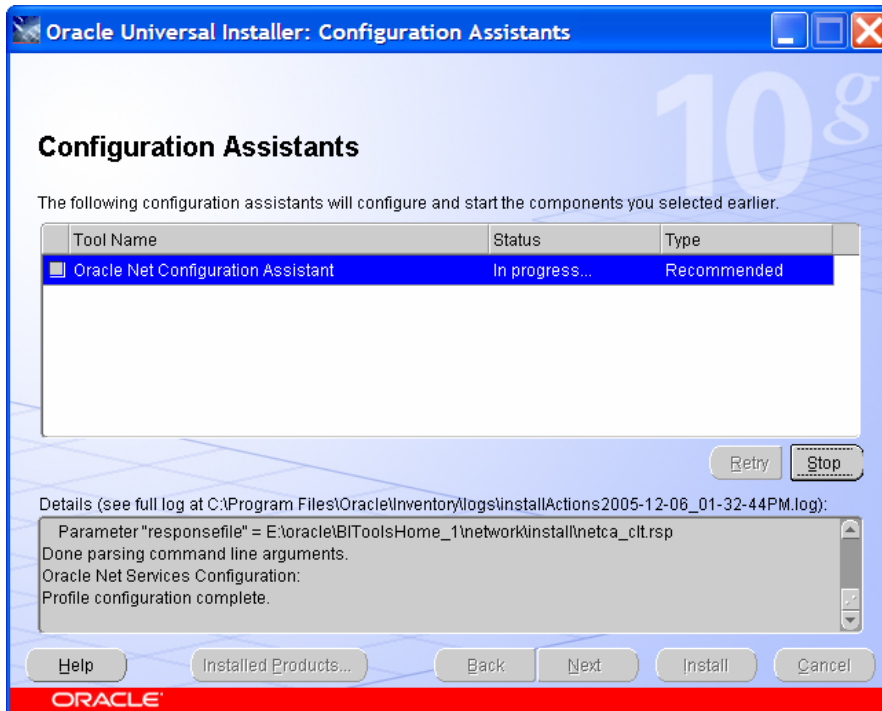
Setting up an EUL in Apps Mode - Windows



7. Finally, when presented with the following **Summary** screen, click **Install**. The actual install will now start.

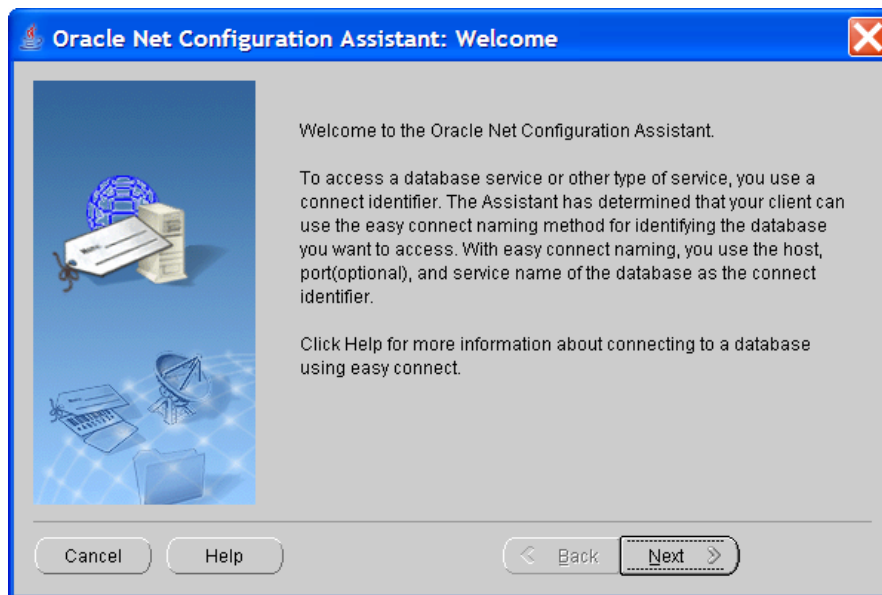


8. During the later stages the installer will configure all of the components needed to run Discoverer. This step will not take very long. However, you must not stop the installer.

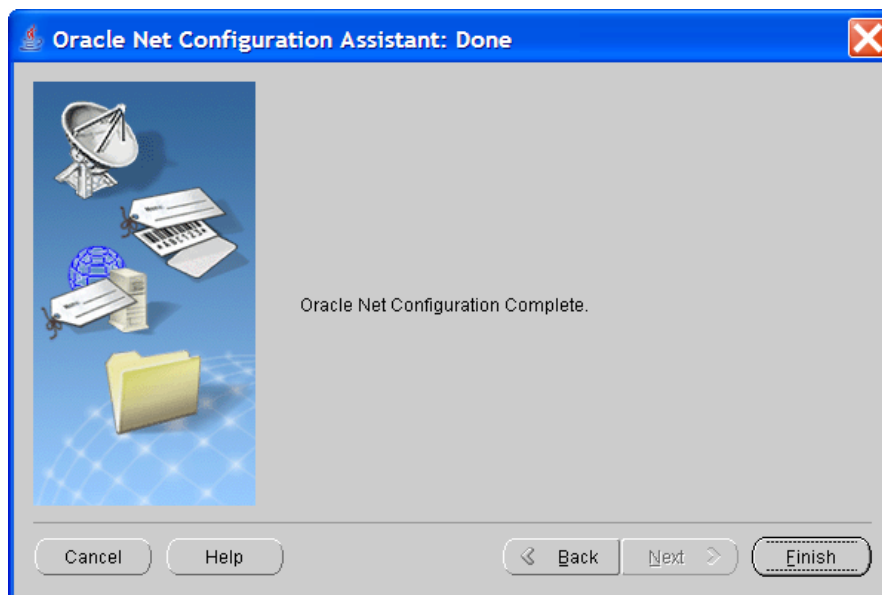


Setting up an EUL in Apps Mode - Windows

9. During the configuration stage the **Net Configuration Assistant** will launch. Click **Next**



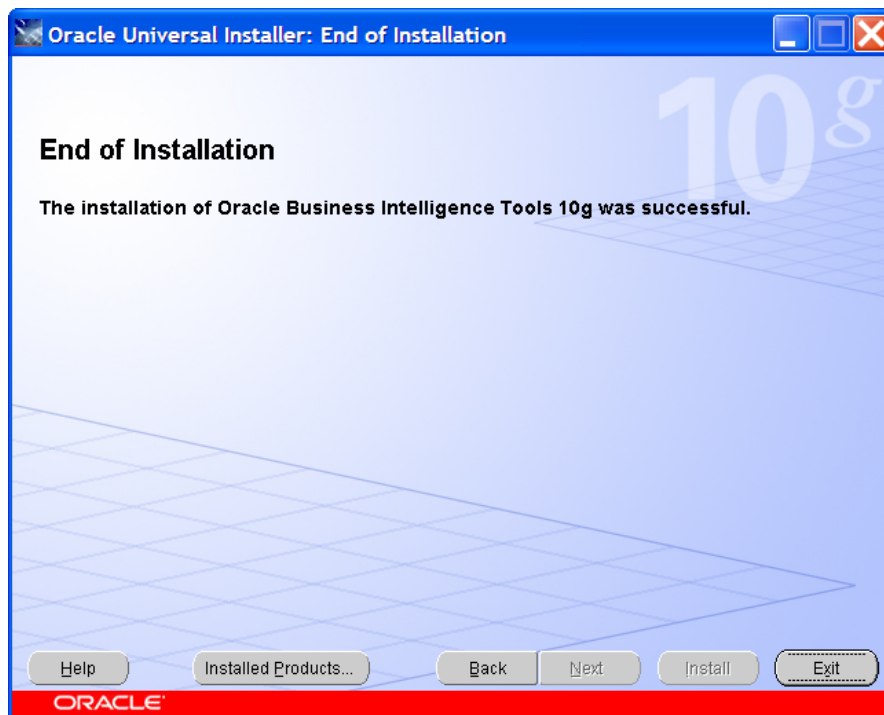
10. The **Net Configuration Assistant** requires no manual intervention and is fully automated. When the install is complete, click **Finish**



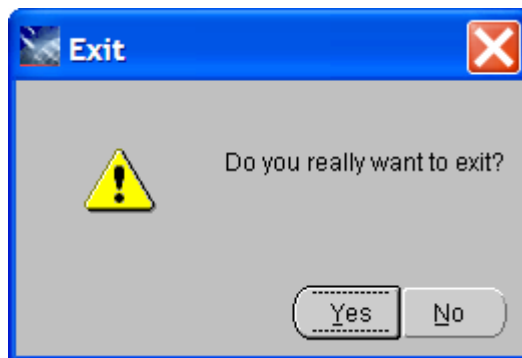
Setting up an EUL in Apps Mode - Windows



11. At the end of the installation you will see the following [End of Installation](#) screen. When done, click **Exit**



12. When prompted “Do you really want to Exit?” click **Yes**



Congratulations, you have successfully installed the Discoverer Admin and Desktop software. Next we need to install the End User Layer (EUL).

Install the EUL in Apps mode

Having successfully installed the Discoverer tools components, the next step is to create the End User Layer and confirm that it is working correctly.

To confirm that the Discoverer Admin tool is working, use the following workflow:

1. In order to test that Discoverer itself is working, you need to copy your standard TNSNAMES.ORA file to this location:

[\\$ORACLE_HOME/network/admin](#)

2. Now let's confirm that the Discoverer Admin tool is up and running. To do this, from your Windows Start button, select the following:

[Start | Programs | Oracle Business Intelligence Tools - BIToolsHome1 | Oracle Discoverer Administrator](#)

3. If this works you should see the following login page:



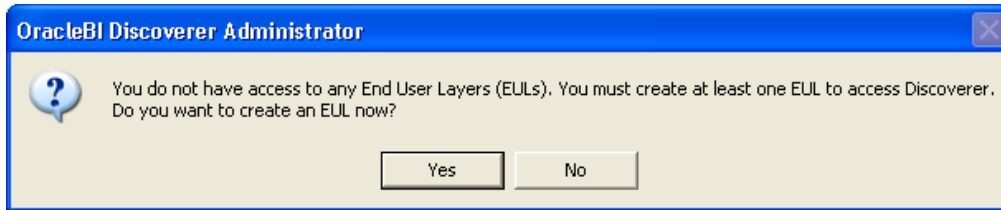
4. Complete this box as follows:

- **User name** - enter [EUL_10G_US](#) (case is unimportant)
- **Password** - enter the password
- **Connect** - enter the database (case is unimportant)
- Click **Connect**

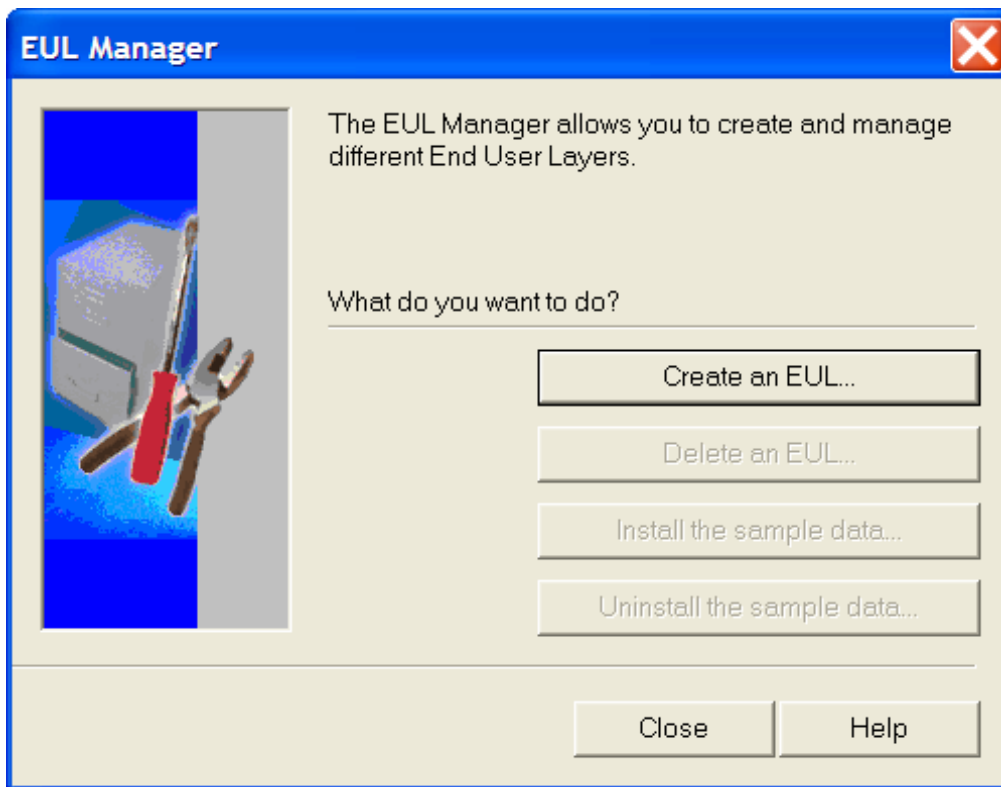
Setting up an EUL in Apps Mode - Windows



5. If your connection works, you will now be informed that you do not have access to any End User Layers and that you need to create one. When prompted **Do you want to create an EUL now?** click **Yes**

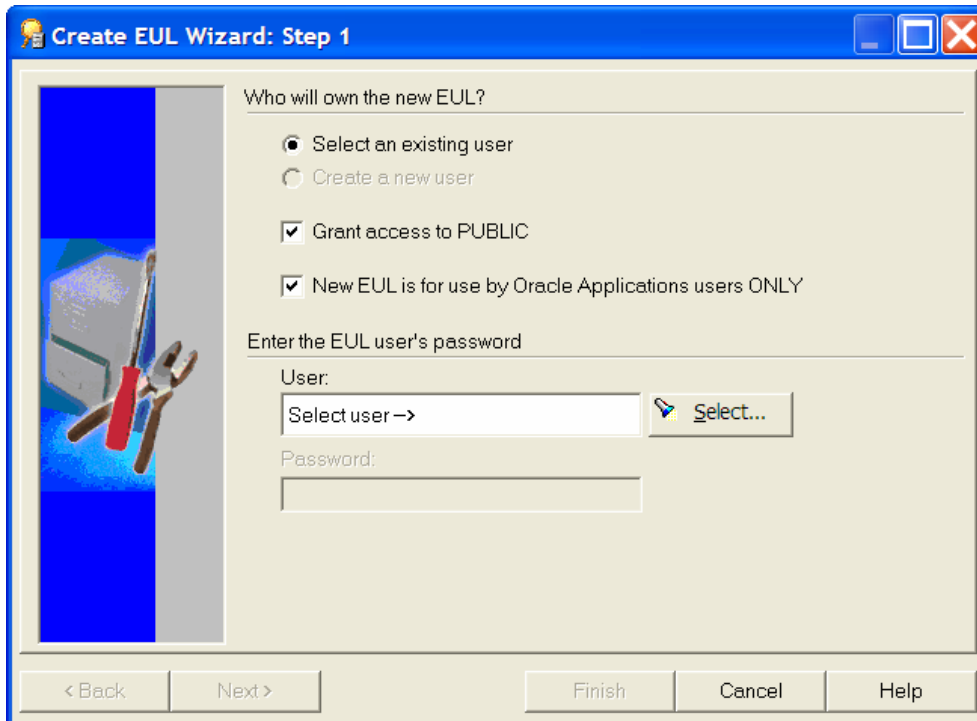


6. On the **EUL Manager** screen, click **Create an EUL**



Setting up an EUL in Apps Mode - Windows

7. Complete the following [Create EUL Wizard: Step 1](#) screen as follows:
- Click **Select an existing user**
 - Check **Grant access to PUBLIC**
 - Check **New EUL is for use by Oracle Applications users ONLY**
 - Click **Select**



Who will own the new EUL?

Select an existing user
 Create a new user

Grant access to PUBLIC
 New EUL is for use by Oracle Applications users ONLY

Enter the EUL user's password

User:
Select user ->

Password:

< Back Next > Finish Cancel Help

Setting up an EUL in Apps Mode - Windows



8. On the [Select User](#) screen, locate the user called EUL_10G_US, or whatever user you used to connect to Discoverer Admin. After you have selected the user, click **OK**

The screenshot shows a 'Select User' dialog box with a blue title bar and a close button (X) in the top right corner. The dialog contains the following elements:

- Instructional text: "This dialog allows you to select a single user from the list. A maximum of 10,000 search results may be displayed."
- Search in: A dropdown menu set to "Users".
- Search by: A dropdown menu set to "Contains".
- Search for: A text input field containing "eul" and a "Go" button to its right.
- Case-sensitive: An unchecked checkbox.
- TIP: "TIP: To see a list of all users, empty the text field and click the Go button."
- Results: A list box containing two entries: "EUL_10G_US" (highlighted in blue) and "EUL_OWNER_US".
- Results count: "2 results" displayed at the bottom right of the list box.
- Buttons: "OK", "Cancel", and "Help" buttons at the bottom of the dialog.

9. You will now be returned to the [Create EUL Wizard: Step 1](#) but this time you will notice that the User details have now been filled in and that the Next button has been activated. When ready, click **Next**

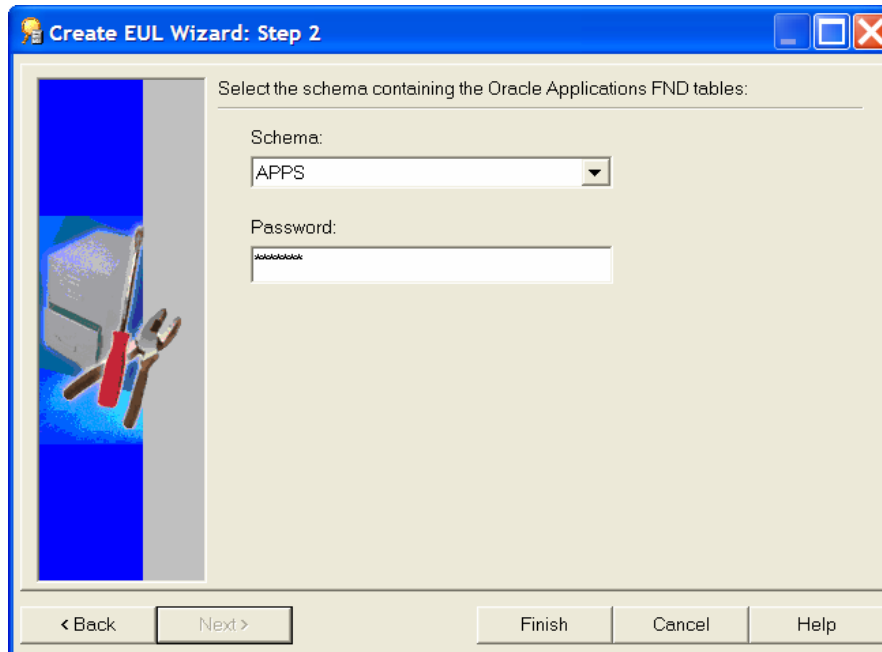
Note: Because you selected the same user that you used to log in with you will not be prompted for the user's password.

Setting up an EUL in Apps Mode - Windows



10. Complete the following [Create EUL Wizard: Step 2](#) screen as follows:

- **Schema** - enter **APPS**
- **Password** - enter the APPS password
- Click **Finish**

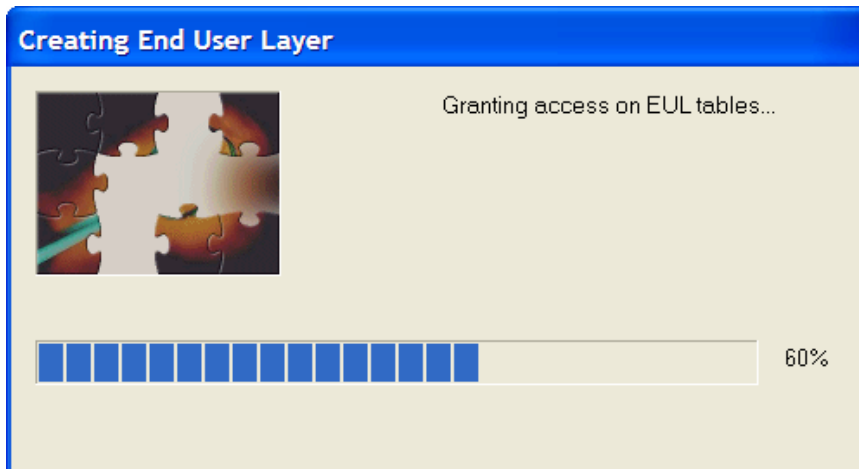


11. Discoverer now begins the install of the EUL. As the install progresses you will see the following screens:

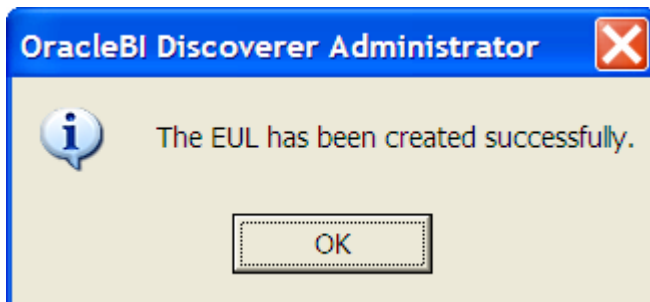
- Creating Tables and Views
- Populating tables with default data
- Granting access on EUL tables



Setting up an EUL in Apps Mode - Windows

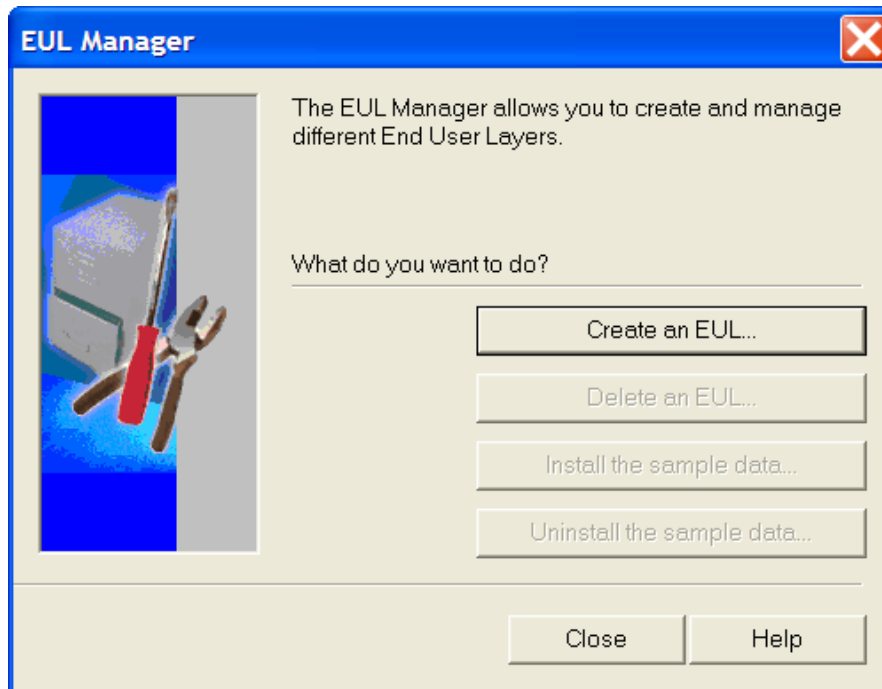


12. Finally, you will see the following completion screen. When done, click **OK**



Setting up an EUL in Apps Mode - Windows

13. Having successfully installed the EUL, you will now be returned to the [EUL Manager](#) screen from where you should click **Close**



14. You will now see the following [Load Wizard: Step 1](#)



15. Because we have not completed the setup that will allow the EUL to operate in Oracle Apps mode, we will not create any business areas at this time. When done, click **Cancel**

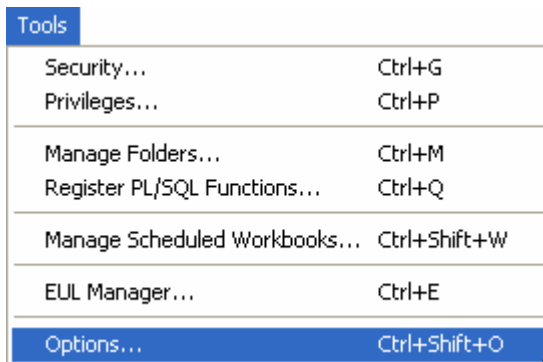
Congratulations, you have successfully installed Discoverer in Apps mode. Next we need to set up the Apps mode privileges

Set up Discoverer Apps mode privileges

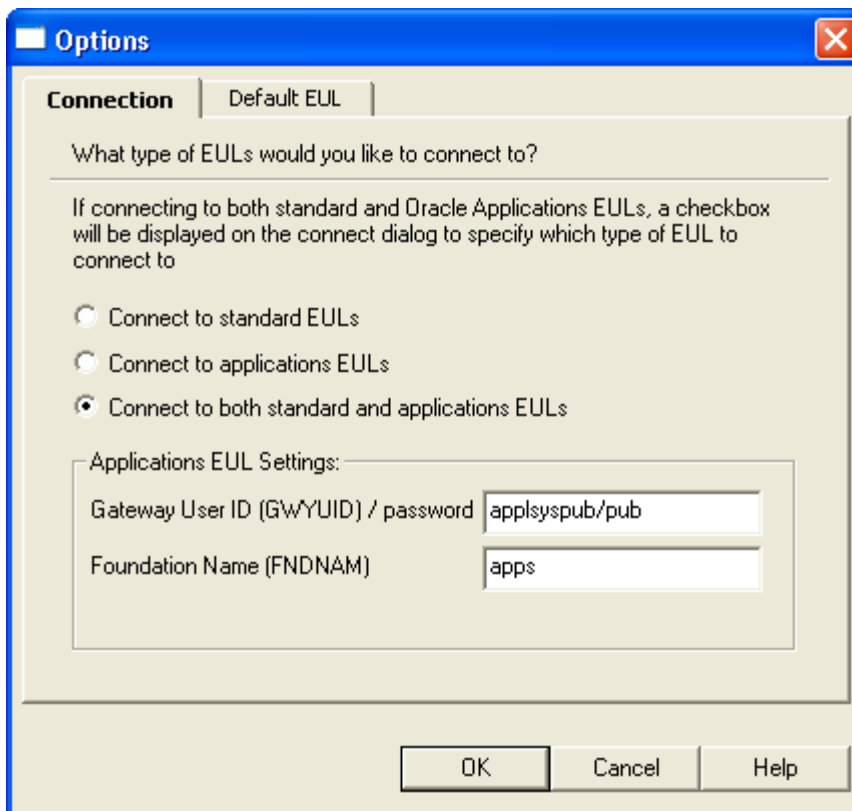
Having successfully created an Apps mode EUL, the next step is to set up the Apps mode privileges

To set up Apps mode privileges, use the following workflow:

1. If not already logged in, launch the Discoverer Administrator tool and connect as the owner of the EUL, in this case EUL_10G_US
2. If you are in the Load Wizard, click **Cancel**
3. From the menu bar, select **Tools | Options**



4. Click the **Connection** tab



Setting up an EUL in Apps Mode - Windows



As you can see in the above illustration, the **Connection** tab has three radio buttons and an area called **Applications EUL Settings**. The three radio buttons are:

- **Connect to standard EULs** - check this if your organization will only ever be using Discoverer in standard mode
- **Connect to applications EULs** - check this if your organization will only ever be using Discoverer in Apps mode
- **Connect to both standard and applications EULs** - check this if your organization will be using Discoverer in both Apps and standard modes. If you are wondering how this can be, let us explain. Some organizations use Discoverer in Apps mode against their Oracle Apps database but use it in standard mode against another database, such as a Data Warehouse. Because there is only one Administrator tool, the same tool needs to be able to administer Discoverer in both modes, hence the third option on the screen

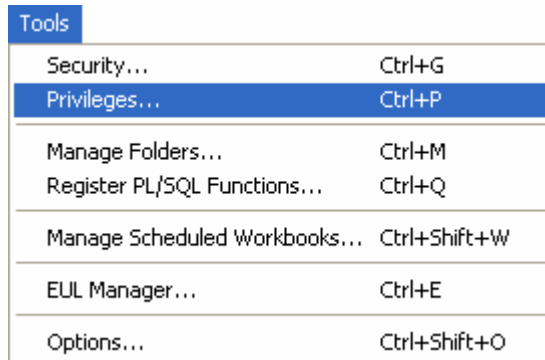
Having enabled Discoverer in Apps mode, and specified whether you will only be administering Apps EULs or a combination of standard and Apps EULs, complete the **Connection** tab as follows:

- Click **Connect to both standard and applications EULs**
- **Gateway User ID / password** - enter **appliesyspub/pub**
- **Foundation Name** - enter **apps** or whichever user your organization is using for the ownership of the Apps foundation tables
- Click **OK**

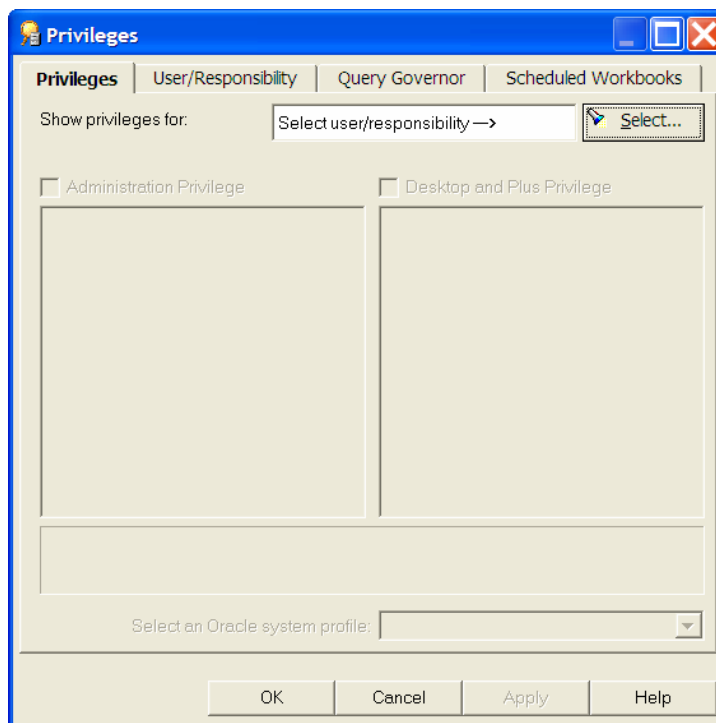
Note: we are not asked for the Apps password because that was already entered during the EUL creation stage

Setting up an EUL in Apps Mode - Windows

- From the menu bar, select **Tools | Privileges**




- Click the **Privileges** tab and then click **Select**



- On the **Select User/Responsibility** screen, pick the Responsibility or Apps user that you want to use for managing Discoverer

Setting up an EUL in Apps Mode - Windows



Select User/Responsibility 

This dialog allows you to select a single user or responsibility from the list. A maximum of 10,000 search results may be displayed.

Search in:

Search by:

Search for:

Case-sensitive

TIP: To see a list of all users/responsibilities, empty the text field and click the Go button.

Results:

- Discoverer Catalog
- Discoverer EUL Management**
- Oracle ICM Discoverer Reports

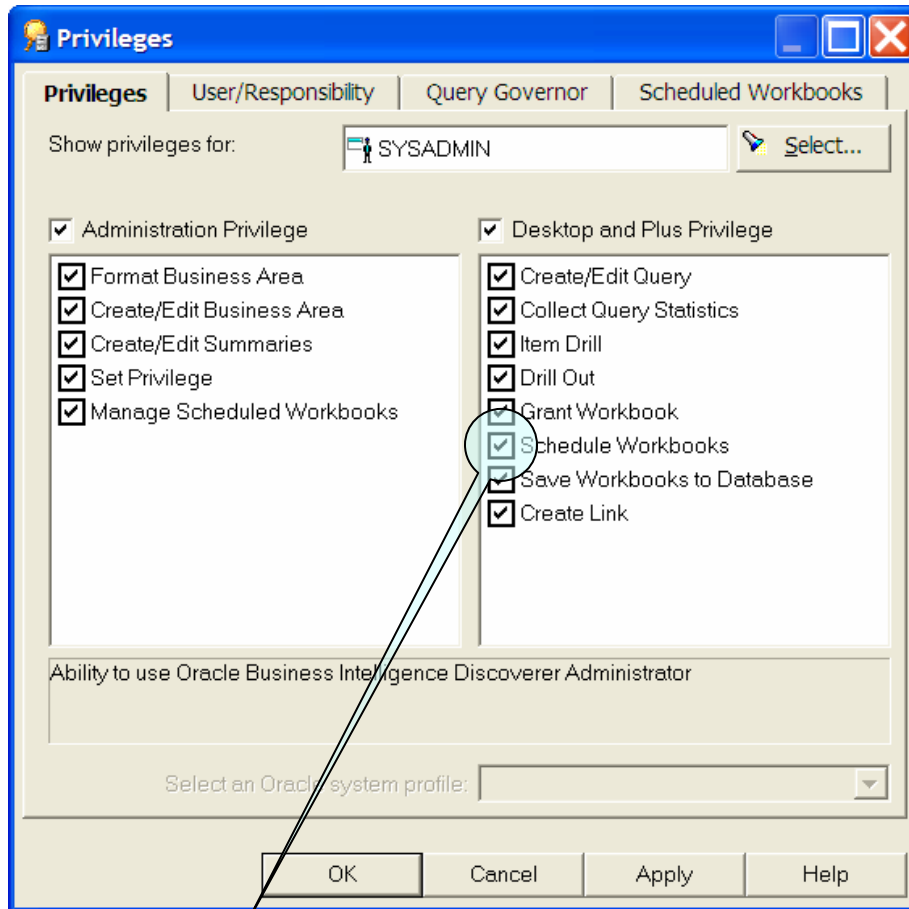
3 results

Used to develop the eul

Note: The recommended method is to use the SYSADMIN account to administer the EUL. If this is not convenient you should select a user that has similar access rights.

Setting up an EUL in Apps Mode - Windows

8. Assign all of the following privileges and then click **OK**

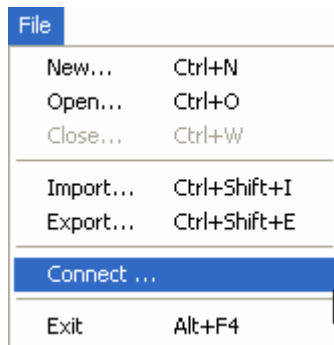


Note: The Schedule Workbooks privilege can only be granted to a user. It cannot be granted to a responsibility

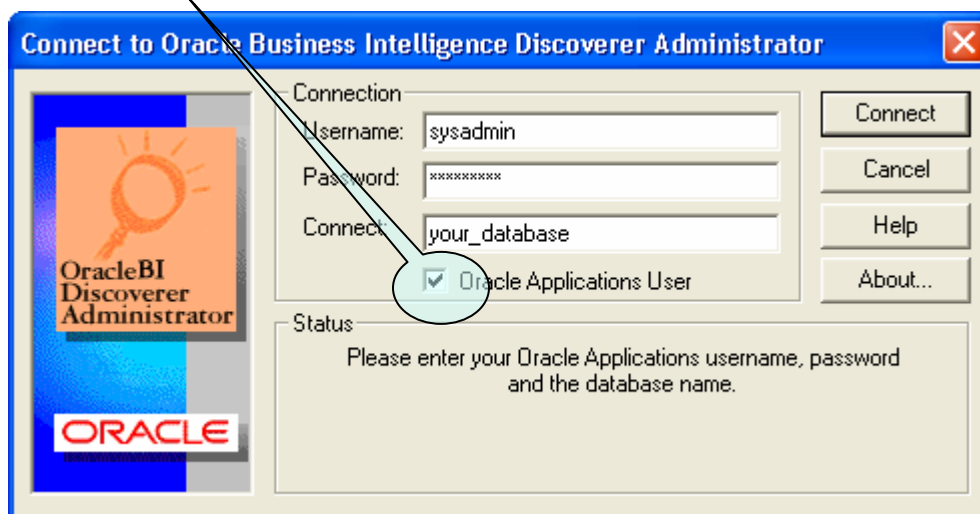
9. Now that you have assigned privileges to the SYSADMIN user or responsibility you now need to re-connect using SYSADMIN or a user that has the responsibility that you granted admin rights to

Setting up an EUL in Apps Mode - Windows

10. From the menu bar, select **File | Connect**.



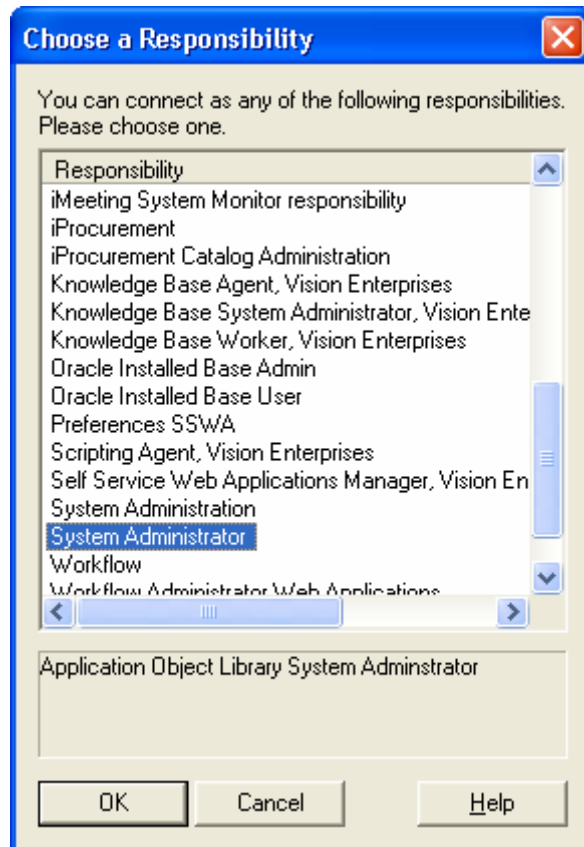
11. The Discoverer Administrator login screen will be displayed once more but this time you should reconnect as the SYSADMIN user. You will of course need to know the SYSADMIN password. As shown in the following illustration you will notice that there is now an additional checkbox called Oracle Applications User. In order to connect properly you will need to check this box.



12. Complete the above dialog box as follows:

- **User name** - enter **sysadmin** (case is unimportant)
- **Password** - enter the password
- **Connect** - enter the database (case is unimportant)
- Make sure **Oracle Applications User** is checked
- Click **Connect**

- Discoverer will now authenticate the SYSADMIN user against the Oracle Applications E-Business Suite. If the credentials are correct, you will be presented with the following **Choose a Responsibility** Screen.



- Select the **System Administrator** responsibility and click **OK**
- From here on, you should only log in to the Administrator tool as the Apps SYSADMIN user. After you have done this the Load Wizard will be prompted.

Do not attempt to administer an Apps mode EUL as the database EUL owner. This account is used to store the EUL tables and views but it is not an Apps account. You will run into serious trouble if you start administering the EUL with it, so please do not try.

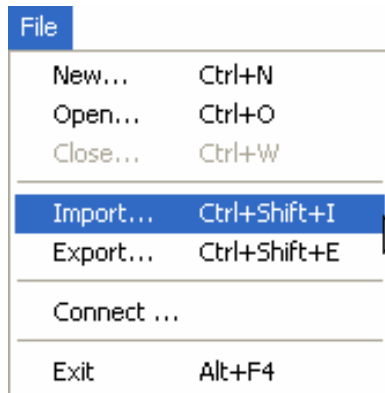
Congratulations, you have successfully installed, configured and set up the End User Layer to work in Apps mode. Next, we need to import some business areas.

Importing business areas

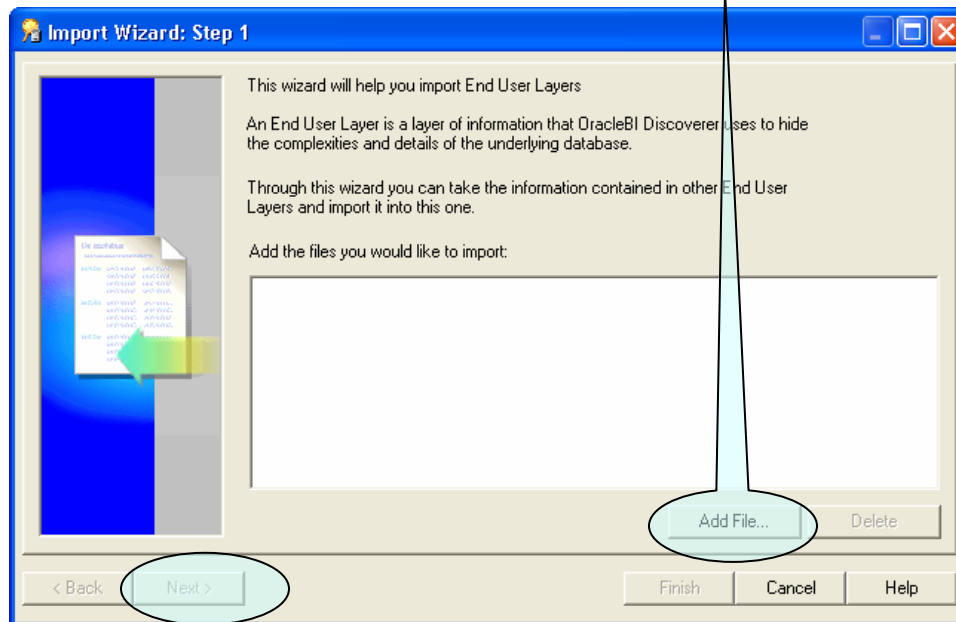
Having successfully installed the Discoverer tools components and set up the EUL to work in Apps mode, the next step is to import some 4i business areas.

To import 4i business areas into 10g, use the following workflow:

1. If not already logged in, launch the Discoverer Administrator tool and connect as SYSADMIN
2. From the menu bar, select **File | Import**



3. When Discoverer opens the **Import Wizard**, click **Add File**

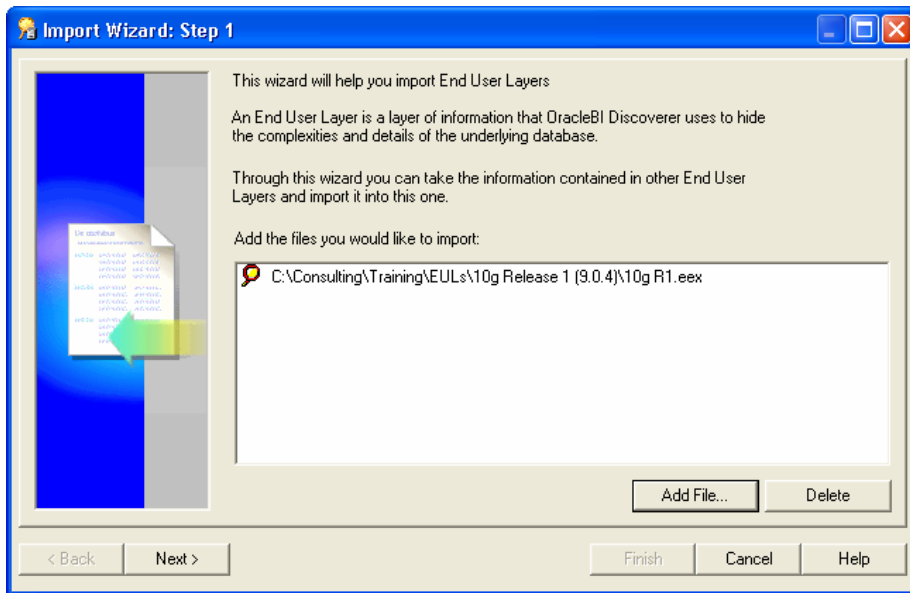


Note: The Next button will be grayed out until you select a file to import

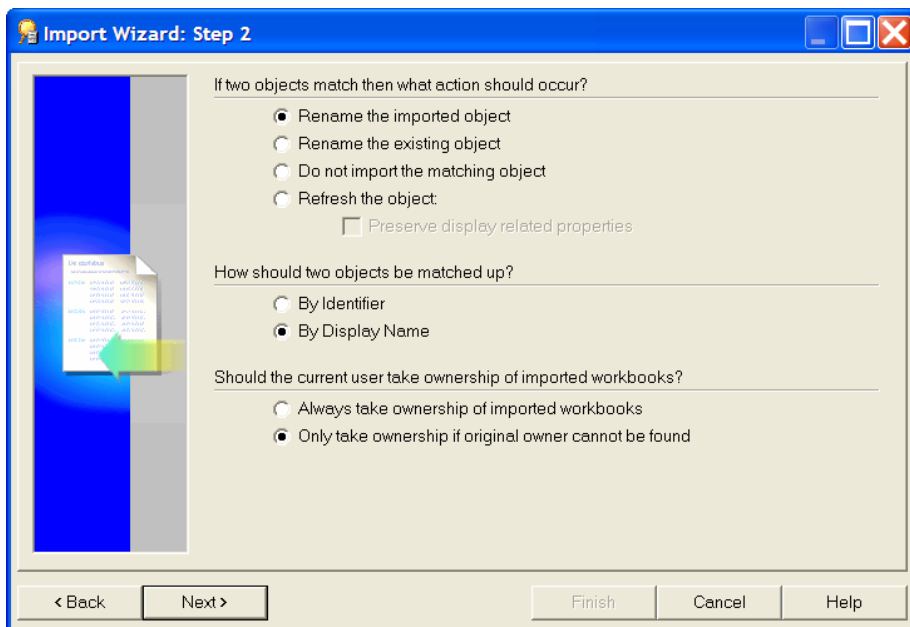
Setting up an EUL in Apps Mode - Windows



4. Having selected the file to import, Discoverer displays the name and location of the file in the box.



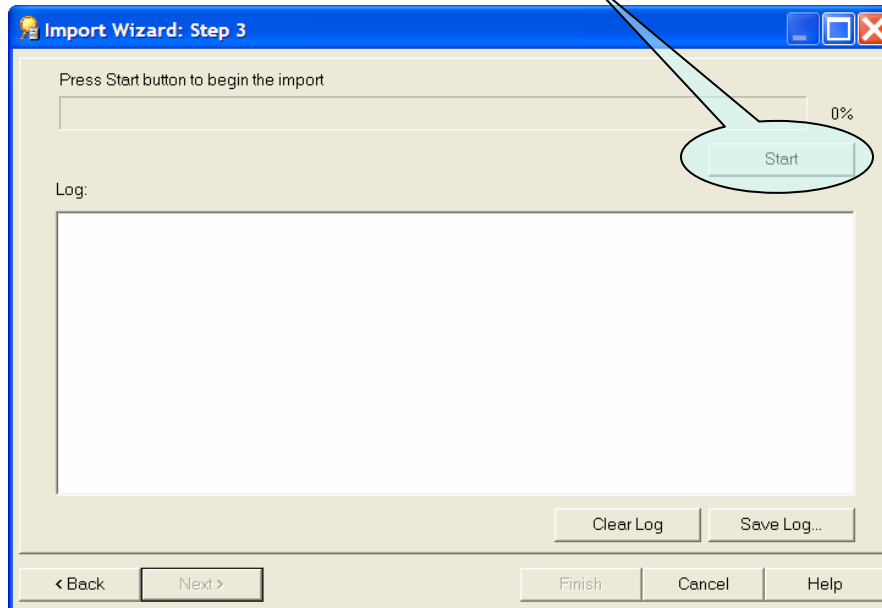
5. Click **Next**
6. Discoverer displays the [Import Wizard: Step 2](#)



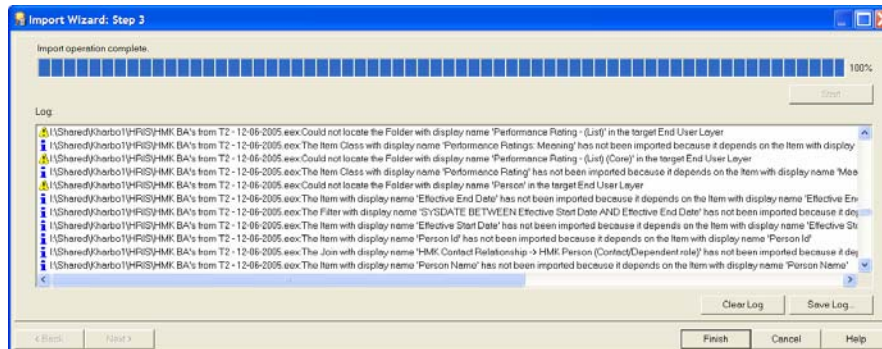
7. Complete the above screen as shown above and then click **Next**

Setting up an EUL in Apps Mode - Windows

8. On the **Import Wizard: Step 3** click **Start**



9. Discoverer starts the install proper. As the install progresses, you will see a status log being generated on screen



10. When the import process has completed parsing the import file you have the following options:

- If no issues were reported in the log click **Finish**
- If issues were reported in the log, use the scroll bar to look at the issues and decide whether the issues are manageable or not. If you want to permanently keep a copy of the log click **Save Log**
- If the issues are not manageable click **Cancel**, otherwise click **Finish**

If you clicked Finish, congratulations, you have successfully imported the 4i business area(s) into Discoverer 10g